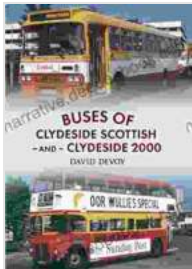


# Buses of Clydeside Scottish and Clydeside 2000



## Buses of Clydeside Scottish and Clydeside 2000

by David Devoy

★★★★☆ 4.7 out of 5

Language	: English
File size	: 10359 KB
Text-to-Speech	: Enabled
Screen Reader	: Supported
Enhanced typesetting	: Enabled
Word Wise	: Enabled
Print length	: 96 pages
Lending	: Enabled



Buses of Clydeside Scottish and Clydeside 2000 were pivotal players in the transportation landscape of Scotland. Their iconic buses carried millions of passengers over decades, connecting communities and shaping the way people traveled throughout the region. This article delves into their rich history, from their humble beginnings to their eventual merger and beyond.

## Origins

The roots of Buses of Clydeside Scottish can be traced back to the early 20th century when a group of independent bus operators emerged in the Clydeside area. These operators provided vital transportation services to the growing population of the region, particularly to the industrial centers along the Clyde River.

## **Clydeside Scottish**

In 1961, several of these independent operators merged to form Clydeside Scottish Motor Services Limited. This marked a significant milestone in the history of bus transportation in the region, as it created a unified and more efficient operation. Clydeside Scottish quickly became renowned for its fleet of modern and reliable buses, and for its commitment to providing high-quality service to its passengers.

One of the most iconic buses operated by Clydeside Scottish was the Leyland Atlantean. This double-decker bus, with its distinctive front-mounted engine and sleek lines, became synonymous with the company. Clydeside Scottish also operated a variety of other buses, including the Dennis Dominator and the Volvo Olympian, which further expanded its fleet and enhanced its ability to meet the transportation needs of the region.

## **Clydeside 2000**

In 1989, Clydeside Scottish merged with another major bus operator in the region, Western SMT, to form Clydeside 2000. This merger created one of the largest bus companies in Scotland, with a vast network of routes and a fleet of over 1,000 buses. Clydeside 2000 continued to operate under the Clydeside Scottish brand, which had become synonymous with reliable and efficient bus transportation in the region.

## **Iconic Buses**

Throughout their history, Buses of Clydeside Scottish and Clydeside 2000 operated a wide range of iconic buses that became familiar sights on the roads of Scotland. Some of the most memorable buses included:

- Leyland Atlantean: This double-decker bus was a mainstay in the Clydeside Scottish fleet for many years and was known for its reliability and spacious interior.
- Dennis Dominator: Another popular double-decker bus used by Clydeside Scottish, the Dominator was admired for its modern design and powerful performance.
- Volvo Olympian: Introduced in the late 1980s, the Olympian was the first low-floor double-decker bus to operate in the Clydeside region and offered improved accessibility for passengers.
- Wright Eclipse Gemini: This single-decker bus, introduced by Clydeside 2000, featured a modern and stylish design and played a significant role in the company's fleet renewal program.

### **Acquisition by Stagecoach**

In 2005, Clydeside 2000 was acquired by Stagecoach, one of the largest bus operators in the United Kingdom. This acquisition marked a significant change for Clydeside 2000, as it became part of a larger organization with a national presence. Stagecoach continued to operate the Clydeside Scottish brand for several years, but eventually phased it out in favor of its own brand identity.

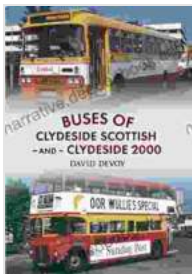
### **Legacy**

Buses of Clydeside Scottish and Clydeside 2000 left a lasting legacy on the transportation landscape of Scotland. Their iconic buses and commitment to providing reliable and efficient service shaped the way people traveled in the region for decades. The company's buses became a familiar sight on the roads, connecting communities and playing a vital role in the growth and development of the Clydeside area.

The history of Buses of Clydeside Scottish and Clydeside 2000 is a testament to the importance of public transportation in Scottish society. Their iconic buses and dedicated staff played a pivotal role in connecting communities and supporting the economic growth of the region. The legacy of these bus companies continues to inspire the next generation of transportation providers, who strive to deliver safe, reliable, and efficient services to the people of Scotland.

## References

- Buses of Clydeside Scottish: Wikipedia
- Clydeside 2000: Wikipedia
- Bus Enthusiast's Guide to Clydeside Scottish and Clydeside 2000: Amazon
- Stagecoach: Website



## Buses of Clydeside Scottish and Clydeside 2000

by David Devoy

★★★★☆ 4.7 out of 5

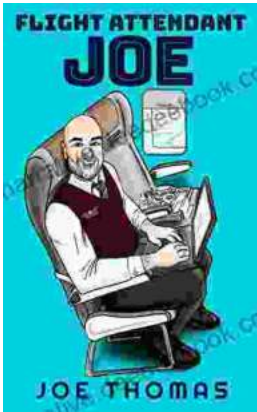
Language : English  
File size : 10359 KB  
Text-to-Speech : Enabled  
Screen Reader : Supported  
Enhanced typesetting : Enabled  
Word Wise : Enabled  
Print length : 96 pages  
Lending : Enabled





## **Parasols and Peril: Adventures in Grace**

In the quaint town of Grace, where secrets hide in plain sight and danger lurks beneath the surface, a group of extraordinary young women embark on...



## **Flight Attendant Joe: A Dedicated Professional in the Aviation Industry**

Flight Attendant Joe is a highly experienced and dedicated flight attendant who has been working in the aviation industry for over 15 years. He has...